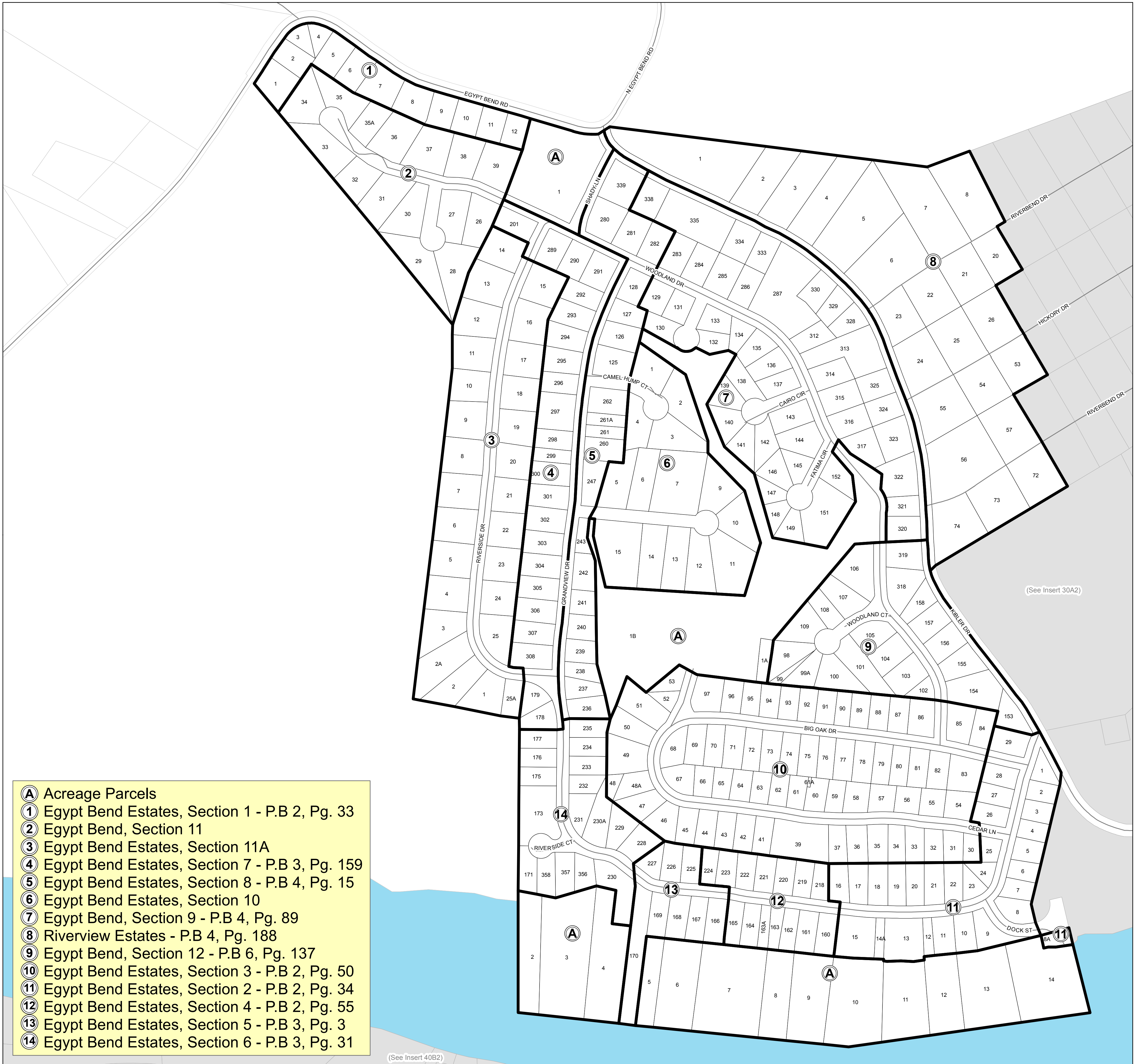
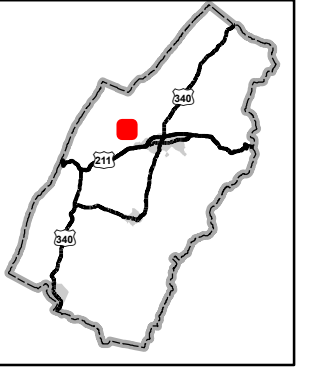


Insert Parcels

Page County, Virginia



- (A)** Acreage Parcels
- (1)** Egypt Bend Estates, Section 1 - P.B 2, Pg. 33
- (2)** Egypt Bend, Section 11
- (3)** Egypt Bend Estates, Section 11A
- (4)** Egypt Bend Estates, Section 7 - P.B 3, Pg. 159
- (5)** Egypt Bend Estates, Section 8 - P.B 4, Pg. 15
- (6)** Egypt Bend Estates, Section 10
- (7)** Egypt Bend, Section 9 - P.B 4, Pg. 89
- (8)** Riverview Estates - P.B 4, Pg. 188
- (9)** Egypt Bend, Section 12 - P.B 6, Pg. 137
- (10)** Egypt Bend Estates, Section 3 - P.B 2, Pg. 50
- (11)** Egypt Bend Estates, Section 2 - P.B 2, Pg. 34
- (12)** Egypt Bend Estates, Section 4 - P.B 2, Pg. 55
- (13)** Egypt Bend Estates, Section 5 - P.B 3, Pg. 3
- (14)** Egypt Bend Estates, Section 6 - P.B 3, Pg. 31

(See Insert 40B2)

(See Insert 30A2)



LURAY DISTRICT

May 2019
Commissioner of Revenue
Reference Use Only

Any determination of topography or contours, or any depiction of physical improvements, property lines or boundaries is for general information only and shall not be used for the design, modification, or construction of improvements to real property or for flood plain determination.

**Insert
30A1**