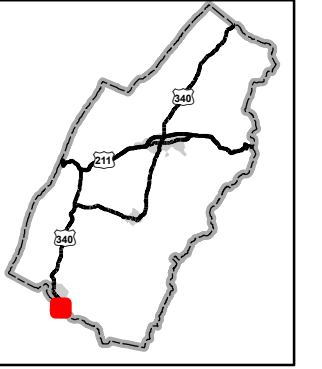
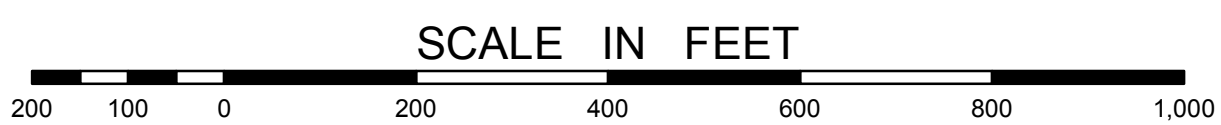
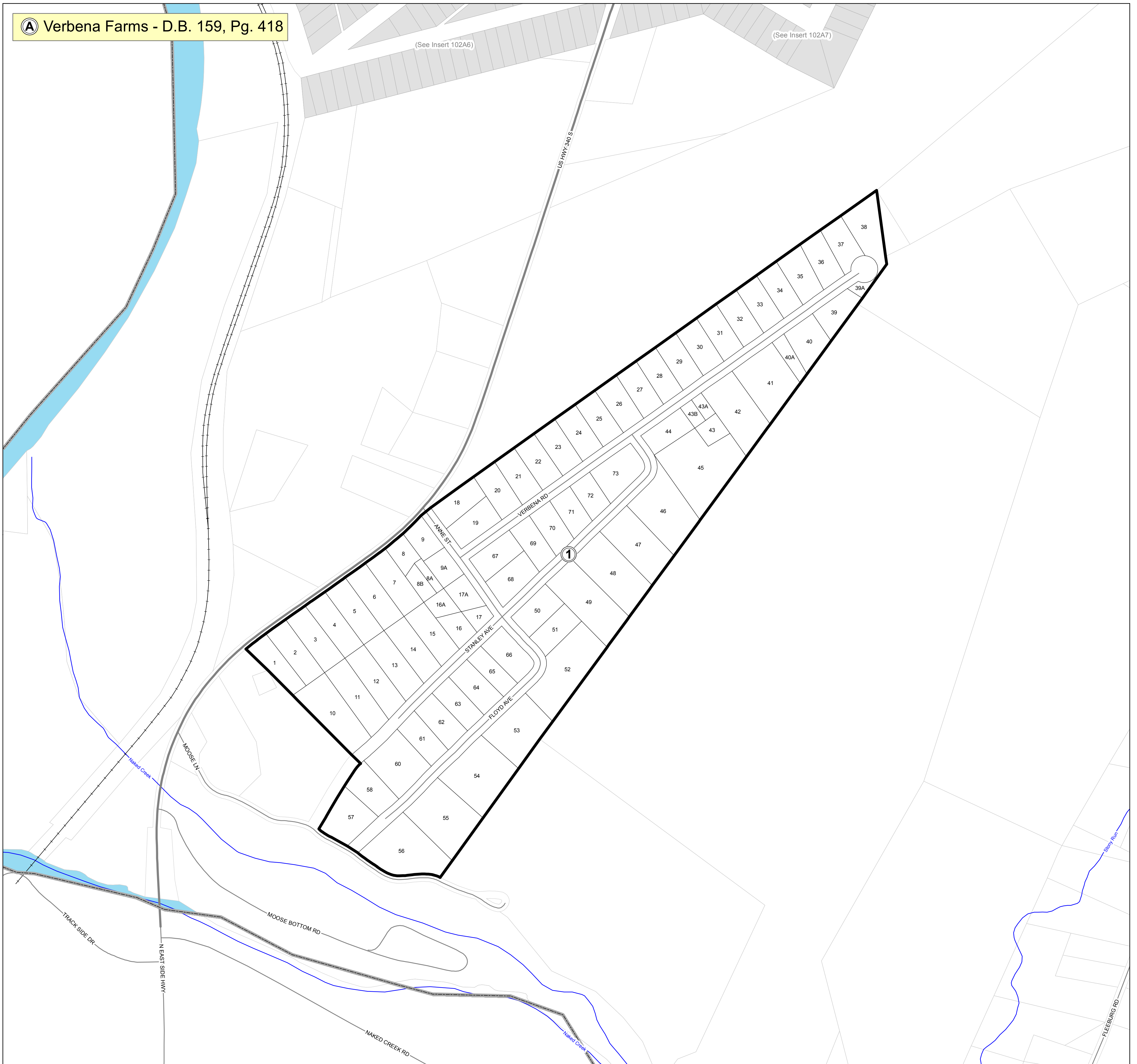


Insert Parcels

Page County, Virginia



A Verbena Farms - D.B. 159, Pg. 418



SHENANDOAH IRON WORKS DISTRICT

May 2019
Commissioner of Revenue
Reference Use Only

Any determination of topography or contours, or any depiction of physical improvements, property lines or boundaries is for general information only and shall not be used for the design, modification, or construction of improvements to real property or for flood plain determination.

**Insert
102B**